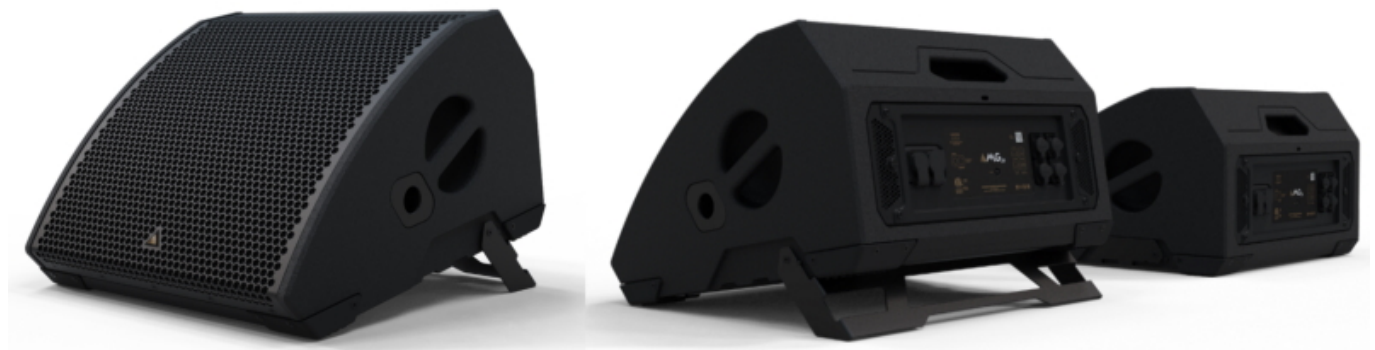


Adamson MG10 & M10



Adamson Systems Engineering proudly announces the launch of the MG10, a dual 10" stage monitor loudspeaker designed to deliver unmatched performance and flexibility for professional audio applications. Developed with precision engineering and innovation at its core, the MG10 promises to redefine expectations for on stage sound. The MG10 is meticulously crafted to deliver exceptional sound clarity across a frequency range of 60 Hz to 20 kHz, making it an ideal choice for any type of live performance. Capable of producing an impressive maximum SPL of 139 dB, the MG10 ensures powerful and dynamic sound reproduction in any environment.

Central to the MG10's performance is its integrated 2-channel Class-D amplifier, which delivers an outstanding 2400 W total output. This cutting-edge technology is paired with Adamson's proprietary onboard processing, ensuring precision and consistency in audio performance. To further enhance its versatility, the MG10 includes a 50° horizontal and 100° vertical coverage pattern, enabling accurate sound dispersion in diverse acoustic settings.

Compact yet robust, the MG10 measures 20.5-inches in width, 12.75-inches in height, and 21.25-inches in depth, with a manageable weight of 26 kg (57 lbs). Its design features an integrated pole mount and a kickstand that allows up to a 45° face tilt, making it suitable for a wide range of applications, from floor monitoring to elevated installations. Flexibility is further enhanced by the availability of the MG10 in a passive version, the M10. The passive model offers 80 impedance and advanced Lake processing, providing audio professionals with even greater options for integration into their existing setups.

"We're excited to introduce the MG10 to the professional audio world," says Pieter van Hoogdalem of Adamson Systems Engineering. "This monitor represents a significant leap in acoustic engineering, combining our proprietary waveguide technology with high-excursion dual 10" drivers. The result is a monitor that delivers unprecedented clarity and coverage, designed to meet the exacting standards of today's audio professionals across various applications."

The MG10's design and specifications make it a perfect fit for a broad spectrum of performance applications. From its robust construction to its impeccable sound

Adamson launches the MG10 & M10

Mittwoch, 22. Januar 2025 20:32

quality, the MG10 embodies Adamson's commitment to innovation and excellence in audio engineering.

www.adamson.ai